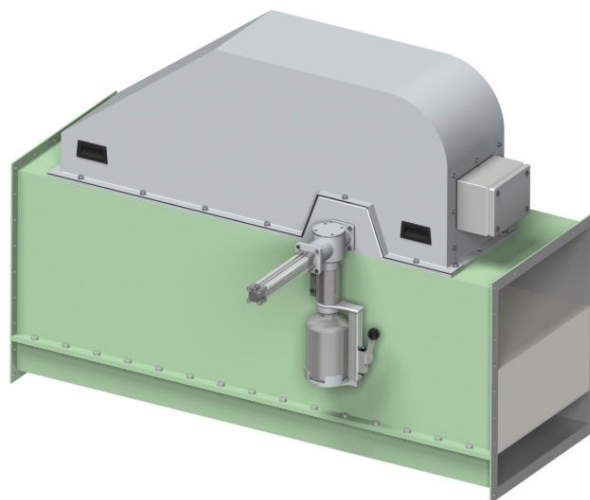


SAMPLER FROM THE CHUTE – SCA40

The sampler is designed for sampling of dry powder materials from a pneumatic chute. During the sampling, a screw sampler in an inclined position moves up and down through material flow in the center of the air slide. In a standby status, it is located in the horizontal position out of the air slide profile. Continuous sample output from the screw sampler can be removed automatically or manually by a piston doser with a defined volume, the rest of the material falls back into the pneumatic chute.

The sampler can be applied for sampling systems with manual or automatic control. Outlet of the sampler can be connected either to a sample distribution system or to the local sample container whereas the container presence is detected by a sensor. It can be used in continuous operation, operated according to requirements of the technology or started manually.

Sampler installation is implemented on the top of the pneumatic chute and neither a textile bed nor a bottom of the pneumatic chute has to be modified.



Main features of new sampler type SCA40

- No separation, segregation and contamination of different fractions of particles – all sample handling is carried out under the same air conditions
- Guaranteed constant volume of each single sample
- Self-cleaning operation (for textile, metal or other objects flowing occasionally in the air slide)
- Optimal height of the sample outlet - on the top side of the air slide
- Easy assembly, change of location – not necessary to modify the textile layer of the air slide - whole sampler is put on the top side of the air slide only
- Very low wear - the sampler tube is touched by transported material only during taking of a single sample

TECHNICAL DATA

Sampled material	powder material, non-sticky
granularity	max. 2mm
maximal temperature	85°C
Pneumatic chute width	220 – 550 mm
Height of chute material layer	30 – 250 mm
Procedure of sample taking	linear across the material layer
Taken sample volume	130 cm ³
Weight	ca 60 kg
Power supply	3 x 400V, 0.12kW
Compressed air ⁽¹⁾	0.5MPa, dry, oil-free

(1) – only for sample output with automatic piston doser